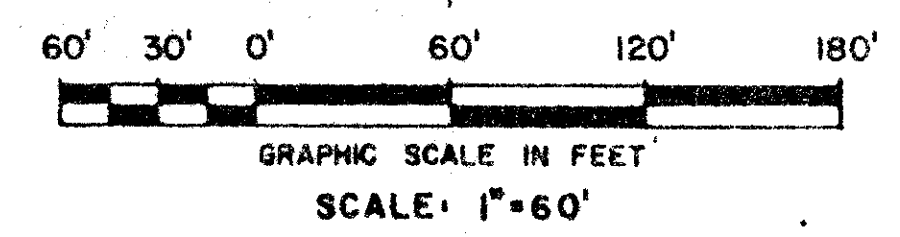


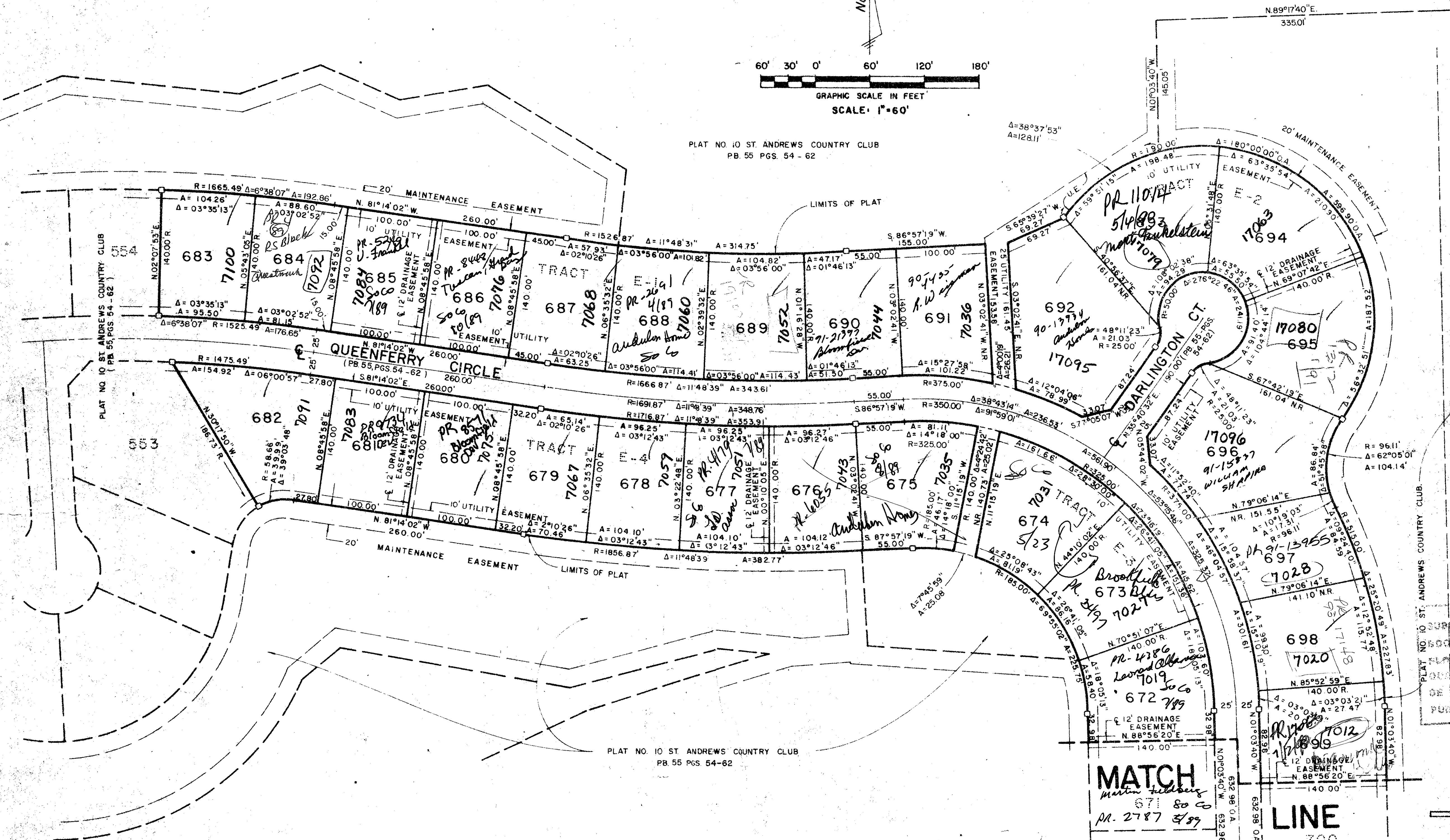
DRAWING NUMBER  
**55/97**

**97**

PRM. NO. 6 PLAT 10  
ST. ANDREWS COUNTRY CLUB



PLAT NO. 10 ST. ANDREWS COUNTRY CLUB  
PB. 55 PGS. 54-62



PLAT NO. 10 ST. ANDREWS COUNTRY CLUB  
PB. 55 PGS. 54-62

**MATCH**  
SEE SHEET 700

**LINE**  
SHEET 3

0305-300

KEY MAP NTS.

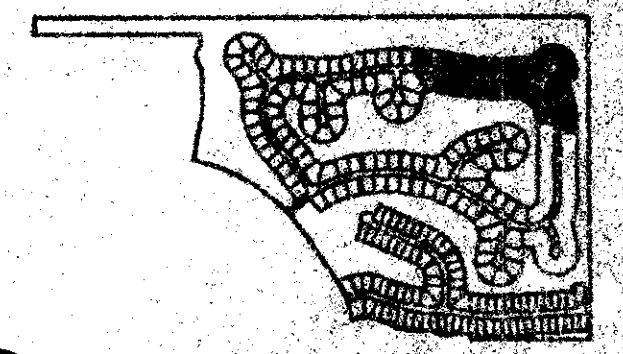
NOTE: ALL 20' MAINTENANCE EASEMENTS SHOWN HEREON ARE PER PLAT 10 ST. ANDREWS COUNTRY CLUB

**PLAT No. 11**  
**ST. ANDREWS COUNTRY CLUB**  
(A P.U.D.)

<b>WILLIAM E. WALLACE, INC.</b> CONSULTING ENGINEERS, LAND PLANNERS & SURVEYORS 1014 ALTON DRIVE, ALI LANE, IRVINE, CALIFORNIA 92714			
FIELD	M. BROWN	JOB NO.	86-177
OFFICE	R.J.C.	DATE	OCT. 1986
CHKD.	C.J.M.	REF.	

ADD. BY **GP**  
CHECKED BY **BT**  
**55/97**

PLAT NO. 10 SUBDIVISION - St. Andrews CC  
BOOK 55 PAGE 97  
DATE OF RECORDING - FLOOD MAP - 25  
PUB. NAME - PLAT 11  
AIR CODE 33484



DRAWING NUMBER

DRAWING NUMBER

DRAWING NUMBER

PLAN-HOLD CORPORATION - IRVINE, CALIFORNIA  
REGISTERED NUMBER 07584

PLAN-HOLD CORPORATION - IRVINE, CALIFORNIA  
REGISTERED NUMBER 07584

PLAN-HOLD CORPORATION - IRVINE, CALIFORNIA  
REGISTERED NUMBER 07584